



Your GUESS Watch User Guide



Everything you need to know about your new timepiece

Contents

About Your Watch	3
Warranty	4
Watch Care	5
Battery	6
 Movements:	
Simple Time / Mini Sweep	7
Date / Day And Date	8
Day And Date	9
Day / Date / 24 Hour	10
Date / 24 Hour	11
6,12 Two-Eye Chronograph With Date	12
6,12 Two-Eye Chronograph Stopwatch With Date	13
6,9,12 Three-Eye Chronograph With & Without Date	14
6,9,12 Three-Eye 1/20 Second Chronograph With Date	16
2,6,10 Three-Eye Chronograph With Or Without Date Window	18
3,6,9,12 Four-Eye Chronograph	21
Ana-Digit	22
Digital With Alarm / Dual Time / Chronograph	23
Digital With Alarm, Chronograph 1/100 Sec, Countdown And Dual Time	25
Day/Date/AM/PM/Sun/Moon	27
Digital	28
Interchangeables	29
Watch Repair	31
Customer Service	32

About Your Watch

Congratulations on purchasing your GUESS watch. Please read these instructions carefully to understand how to operate your GUESS timepiece. Your watch may not have all of the features described in this booklet.

For additional information, please visit GUESSWatches.com



Warranty

U.S. Customers

We offer a Two Year Warranty on all purchases made from July 1st, 2017.

Any purchases made prior to July 1st, 2017 hold a 10 Year Limited Warranty. In the event of a defect or malfunction within the warranty period from date of purchase, your watch will be repaired or replaced, at our option. The limited warranty does not apply to normal wear and tear, abuse or water damage and excludes batteries, case, strap or bracelet; does not cover costs, parts or labor, shipping & handling, defects or damage caused by any source other than GUESS Watches.

Proof of purchase is required for all Warranty Repairs. If you live in the U.S. contact us for more information.

International Customers

If you live outside the U.S., please contact your local representative for Country Specific warranty information.

<https://guesswatches.com/pages/guesswatches-global-representative#index-u>

Your GUESS or your Gc watch is covered by an international guarantee against any manufacturing defects for a period of 24-months from the date of purchase.

Any part found to be defective within this period will be repaired or replaced at no charge.

The GUESS & Gc Watches international guarantee certificate does not cover defects arising from damage, mishandling, incorrect or abusive use (knocks, crushing, moisture in the case of non water-resistant watches), alteration or repairs not performed by an authorized GUESS or Gc Watches retailer.

Always have your watch checked, serviced and repaired by a GUESS or Gc Agent to maintain your guarantee.

Watch Care

Do

Use a soft tissue to clean the case and crystal of your timepiece.

If the case and crystal look very dirty, use a soft tissue dipped in soapy water.

Do Not

Clean a leather strap with anything other than clean water.

Never use chemical products like petroleum spirits to clean your timepiece.

It is preferable to avoid wearing your GUESS watch to the beach, or to play extreme sports, so as to avoid knocking or scratching them. Repeated contact with perfumes, cosmetics, or household detergents may damage your timepiece.

Watches will withstand Water Resistance if the crystal, crown, push buttons, case and gaskets remain intact.



DO NOT operate crown or buttons when watch is wet or submerged.

A hard knock might cause the watch to lose its water-resistance. Therefore, if you plan to use your watch under water, it is essential to have the water-resistance checked at least every 12 months. If the case has to be opened for any reason, ask your GUESS agent to check the waterproof seals for the case back glass and crown, and replace them if necessary.

Battery

Battery life may vary between 2 to 4 years, depending on the model and the way your watch is used. Most of our quartz watches equipped with a centre seconds-hand have an end-of-life battery warning system (EOL). Approximately two weeks before the end of the battery-life, the centre seconds-hand jumps every four seconds to signal that the battery is running low. When this happens, replace the battery immediately. A dead battery inside the watch might damage the movement.

We strongly recommend that a retailer or jeweler replace battery. If applicable, push the reset button when replacing battery. Battery type is indicated on caseback. Battery life estimates are based on certain assumptions regarding usage; battery life may vary depending on actual usage.

 WARNING	
<ul style="list-style-type: none">• INGESTION HAZARD: This product contains button cell or coin battery.• DEATH or serious injury can occur if ingested.• A swallowed button cell or coin cell battery can cause Internal Chemical Burns in as little as 2 hours.• KEEP new and used batteries OUT OF REACH of CHILDREN• Seek immediate medical attention if a battery is suspected to be swallowed or inserted inside any part of the body.	

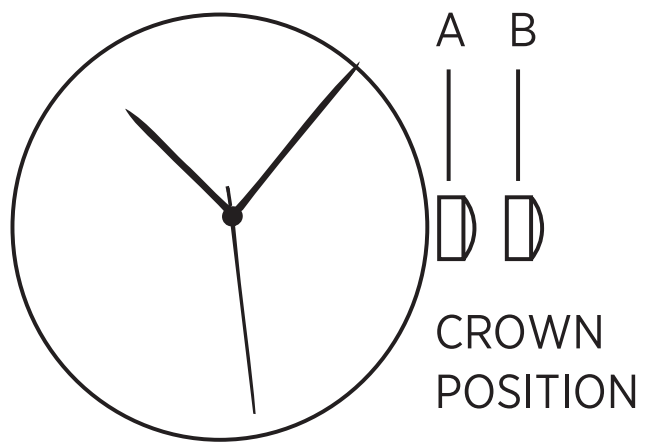
- Remove and immediately or dispose of used batteries according to local regulations and keep away from children. Do NOT dispose of batteries in household trash or incinerate.
- Even used batteries may cause severe injury or death.
- Call a local poison control center for treatment information.
- Battery number, Lithium Metal (CRXXXX series) or Silver Oxide (SRXXXXX Series).
- Nominal battery voltage, Lithium Metal (CRXXXX series) 3.0 V or Silver Oxide (SRXXXXX Series) 1.5 V.
- Non-rechargeable batteries are not to be recharged.
- Do not force discharge, recharge, disassemble, heat above (Lithium Metal (CRXXXX series) 158°F (70 °C) or Silver Oxide (SRXXXXX Series) 140°F (60°C) or incinerate.
- Doing so may result in injury due to venting, leakage or explosion resulting in chemical burns.
- Ensure the batteries are installed correctly accord to polarity.
- Do not mix old and new batteries, different brands or types of batteries, such as alkaline, carbon zinc, or rechargeable batteries.
- Remove and immediately recycle or dispose of batteries from equipment not used for an extended period of time according to local regulations.
- Always completely secure the battery compartment. If the battery compartment does not close securely, stop using the product, remove the batteries and keep them away from children.

Instructions: Simple Time / Mini Sweep

To set the time:

1. PULL out crown to B position.
2. TURN crown either way to correct time.
3. Push in crown to A position.

Note: Mini sweep subdial measures seconds.



Instructions: Date / Day & Date

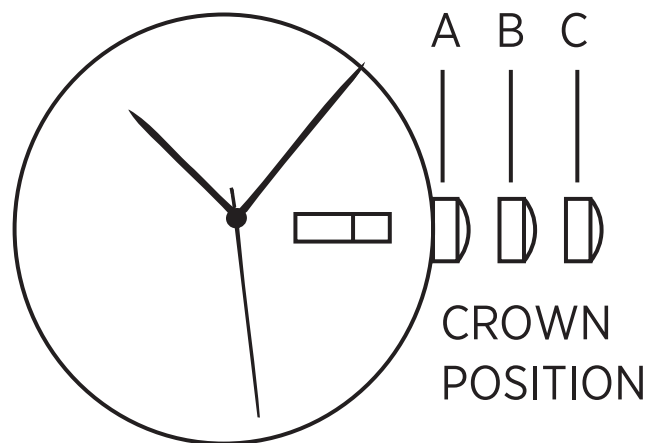
To set the time:

1. PULL out Crown to C position.
2. TURN Crown either way to correct time.
3. PUSH in Crown to A position.

To set the calendar / date:

1. PULL out Crown to B position.
2. TURN Crown away from you to correct date.
3. TURN Crown towards you to correct the day.
4. PUSH in crown to A position.

NOTE: The date changes automatically every 24 hours. On "Day & Date" watches, the days of the week are in English + French. Once set in English, the consecutive days will continue to be in English.



Instructions: Day + Date

To set time:

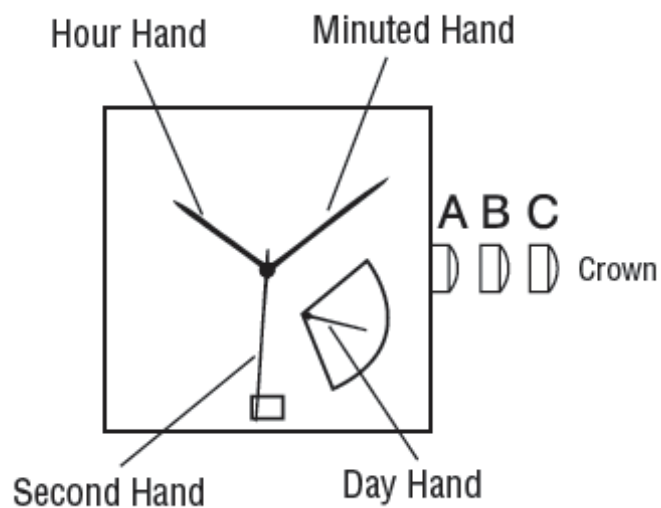
1. PULL out crown to C position.
2. TURN crown either way to correct time.
3. PUSH in crown to A position.

To set date:

1. PULL out crown to B position.
2. TURN crown towards you to correct date.
3. PUSH in crown to A position.

To set day:

1. PULL out crown to B position.
2. TURN crown away from you to change the day.
3. PUSH in crown to A position.



Instructions: Day / Date / 24 Hour

To set time:

1. PULL out crown to C position.
2. TURN crown either way to correct time.
3. PUSH in crown to A position.

To set date:

1. PULL out crown to B position.
2. TURN crown clockwise to correct date.
3. PUSH in crown to A position.

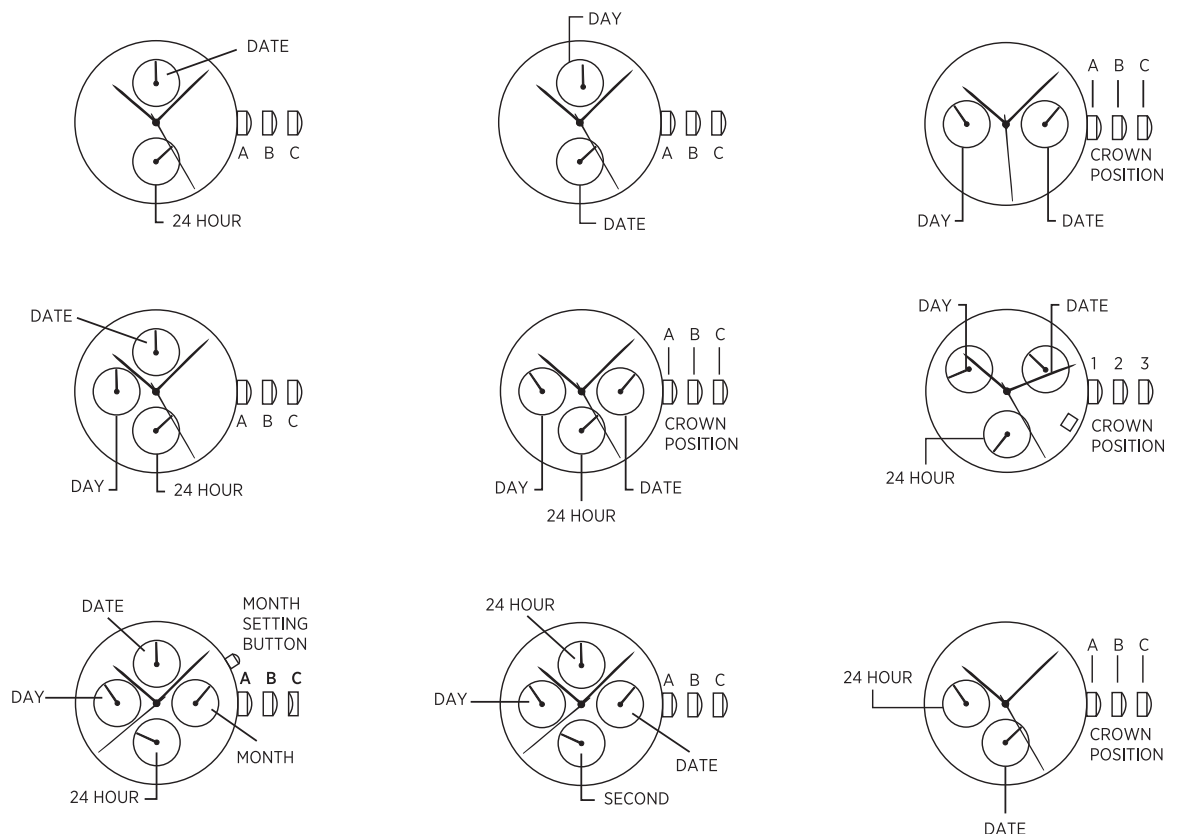
To set day:

1. PULL out crown to C position.
2. Advance time 24 hours to change the day.
3. PUSH in crown to A position.

NOTE: 24 hour indicator can change only when setting the time.

To set month: Push month setting button until the small hand of month is set to the correct month.

NOTE: the date changes automatically every 24 hours.



Instructions: Date / 24 Hour

To set the time:

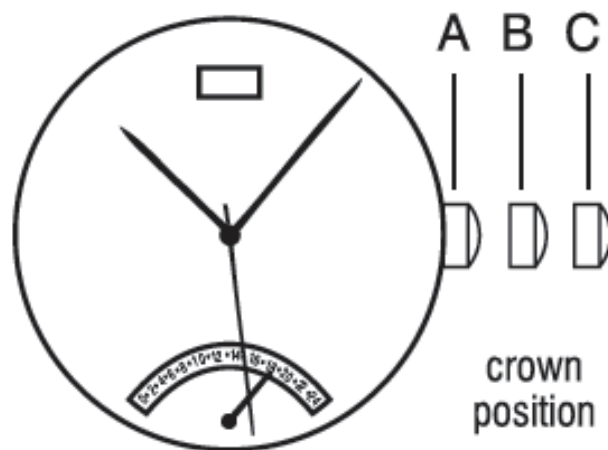
1. PULL out Crown to C position.
2. TURN Crown either way to correct time.
3. PUSH in Crown to A position.

To set the 24 hour indicator:

1. PULL out Crown to B position.
2. TURN Crown counter-clockwise to correct time.
3. PUSH in Crown to A position.

To set the date:

1. PULL out Crown to B position.
2. TURN Crown clockwise to correct date.
3. PUSH in Crown to A position.



Instructions: 6,12, Two-Eye Chronograph With Date

Crown position "A" , "B" & "C".

Pushers "A" (top) & "B" (bottom).

12 o'clock eye "1 minute up to maximum 60 minute". 6 o'clock eye "second".

This chronograph watch has 3 functions: TIME, CALENDAR, STOPWATCH

TIME

To set the time:

1. PULL crown to "C" position.
2. TURN crown either way to correct time.
3. PUSH crown in to "A" position, small second hand begins to run.

CALENDAR

To set the calendar:

1. PULL out crown to "B" position.
2. TURN crown clockwise to correct date.
3. PUSH in crown to "A" position.

NOTE: The date changes automatically every 24 hours.

STOPWATCH

The stopwatch is capable of measuring: 1/1 second elapsed up to maximum of 60 minute (top eye).

BEFORE USING THE STOP WATCH, reset the stopwatch hands to the "60" and "0" positions.

To reset stopwatch hands:

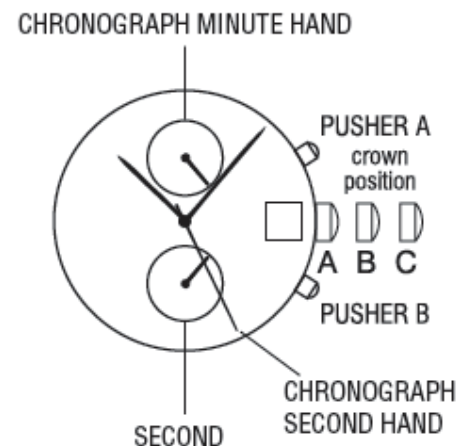
1. PULL crown to position "C".
2. PRESS pusher "A" intermittently until the chronograph second hand is reset to "0".

Standard stopwatch measurement:

1. PRESS pusher "A" to start timing.
2. PRESS pusher "A" to stop timing.
3. PRESS pusher "B" to reset.

Accumulated elapsed time measurement:

1. PRESS Pusher "A" to start timing.
2. PRESS Pusher "A" to stop timing.
3. PRESS pusher "A" to restart timing.
4. PRESS Pusher "A" to stop 2nd timing.
5. PRESS Pusher "B" to reset.



Instructions: 6,12 Two-Eye Chronograph Stopwatch With Date

Crown position "A" , "B" & "C".

Pushers "A" (top) & "B" (bottom).

6 o'clock eye "1 minute up to maximum 60 minute".

12 o'clock eye "second".

This chronograph watch has 3 functions: TIME, CALENDAR, STOPWATCH

TIME

To set the time:

1. PULL Crown to "C" position.
2. TURN Crown either way to correct time.
3. PUSH Crown in to "A" position, small second hand begins to run.

CALENDAR

To set the calendar:

1. PULL out Crown to "B" position.
2. TURN Crown clockwise to correct date.
3. PUSH in Crown to "A" position.

NOTE: The date changes automatically every 24 hours.

STOPWATCH

The stopwatch is capable of measuring: 1/1 second elapsed up to 12 hours.

BEFORE USING THE STOP WATCH, reset the stopwatch hands to the "0" positions.

To reset stopwatch hands:

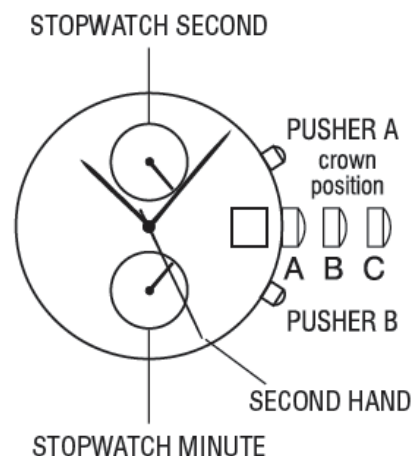
1. PULL Crown to position "C".
2. PRESS Pusher "A" intermittently until the chronograph second hand is reset to "0".

Standard stopwatch measurement:

1. PRESS Pusher "A" to start timing.
2. PRESS Pusher "A" to stop timing.
3. PRESS Pusher "B" to reset.

Accumulated elapsed time measurement:

1. PRESS Pusher "A" to start timing.
2. PRESS Pusher "A" to stop timing.
3. PRESS Pusher "A" to restart timing.
4. PRESS Pusher "A" to stop 2nd timing.
5. PRESS Pusher "B" to reset.



Instructions: 6, 9, 12, Three-Eye Chronograph With & Without Date

Crown position "A", "B" & "C".

Pushers "A" (top) & "B" (bottom)

12 o'clock eye "1/10 seconds elapsed"

9 o'clock eye "minutes elapsed"

6 o'clock eye "seconds elapsed"

This chronograph watch has 3 functions: TIME, CALENDAR, STOPWATCH

TIME

To set the time:

1. PULL Crown to "C" position.
2. TURN Crown either way to correct time.
3. PUSH Crown into "A" position.

CALENDAR

To set the calendar:

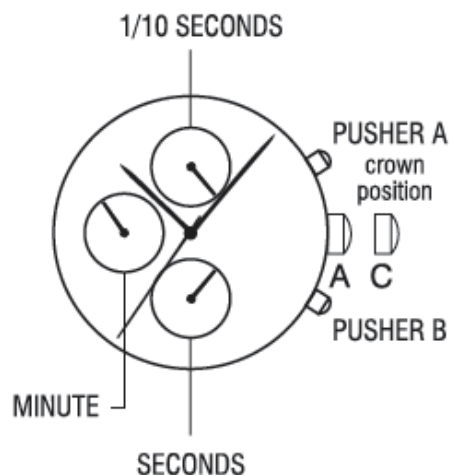
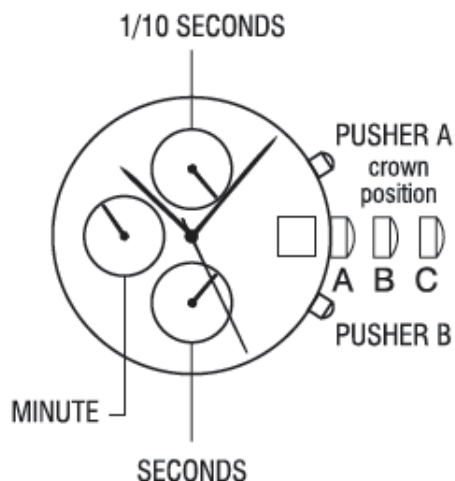
1. PULL out Crown to "B" position.
2. TURN Crown clockwise to correct date.
3. PUSH in Crown to "A" position.

NOTE: The date changes automatically every 24 hours.

STOPWATCH

The stopwatch is capable of measuring: 1/10 seconds elapsed up to one second (top eye). Minutes elapsed up to one hour (middle eye). Seconds elapsed up to one minute (bottom eye)

BEFORE USING THE STOP WATCH, reset the stopwatch hands to the "60" and "0" positions.



Instructions: 6, 9, 12, Three-Eye Chronograph With & Without Date (cont.)

To reset stopwatch hands:

1. PULL Crown to position "C".
2. PRESS Pusher "A" intermittently until the top eye hand is reset to "0".
3. PRESS Pusher "B" intermittently until the middle and top eye hands is reset to "60".

NOTE: PRESSING and HOLDING either Pusher "A" or "B" will cause the hands to continue to move until the pusher is released.

If the stopwatch hands move improperly:

1. PULL out the Crown to "B" position.
2. PRESS Pushers "A" & "B" simultaneously for 3 seconds.
3. RELEASE Pushers, stopwatch hands will move 180 degrees.
4. PUSH Crown in to "A" position.

Standard stopwatch measurement:

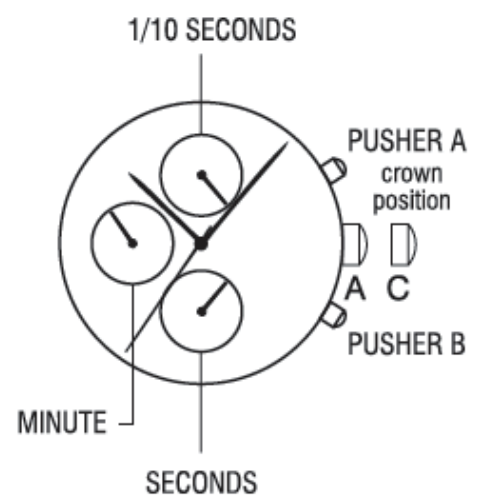
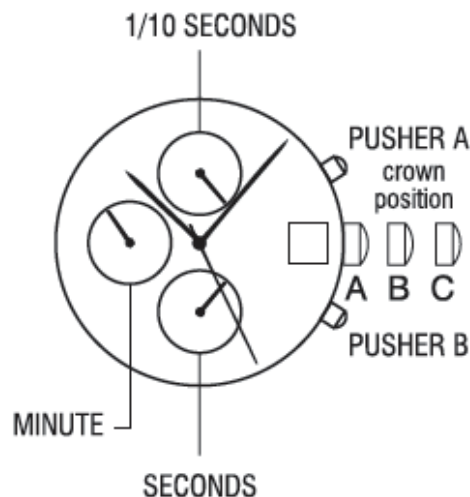
1. PRESS Pusher "A" to start timing.
2. PRESS Pusher "A" to stop timing.
3. PRESS Pusher "B" to reset.

Timing 2 competitors:

1. PRESS Pusher "A" to start timing.
2. PRESS Pusher "B" to stop timing.
3. PRESS Pusher "A" to stop timing of second event.
4. PRESS Pusher "B" to view time of second event.
5. PRESS Pusher "B" to reset.

Split time:

1. PRESS Pusher "A" to start timing.
2. PRESS Pusher "B" to stop split.
3. PRESS Pusher "B" to begin again.
4. PRESS Pusher "A" to stop.
5. PRESS Pusher "B" to reset.



Instructions: 6, 9, 12, Three-Eye 1/20 Second Chronograph With Date

Crown position "A", "B" & "C".

Pushers "A" (top) & "B" (bottom).

6 o'clock eye "hour & minutes elapsed".

9 o'clock eye "second".

12 o'clock eye "1/20 seconds elapsed".

This chronograph watch has 3 functions: TIME, CALENDAR, STOPWATCH

TIME

To set the time:

1. PULL Crown to "C" position.
2. TURN Crown either way to correct time.
3. PUSH Crown in to "A" position.

CALENDAR

To set the calendar:

1. PULL out Crown to "B" position.
2. TURN Crown clockwise to correct date.
3. PUSH in Crown to "A" position.

NOTE: The date changes automatically every 24 hours.

Do not set the date between 9:00 PM and 1:00 AM.

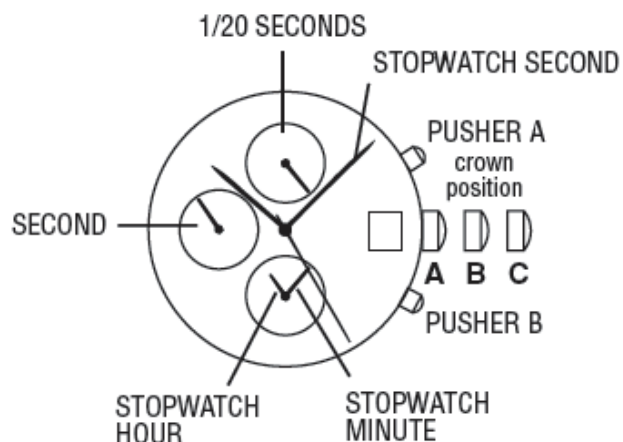
STOPWATCH

The stopwatch is capable of measuring:

Hour & Minutes elapsed up to 12 hours (bottom eye).

1/20 Seconds elapsed up to 12 hours (top eye).

Seconds elapsed up to 12 hours.



Instructions: 6, 9, 12, Three-Eye 1/20 Second Chronograph With Date (cont.)

BEFORE USING THE STOP WATCH, reset the stopwatch hands to the "60" and "12 o'clock" positions.

To reset stopwatch hands:

1. PULL Crown to position "C".
2. PRESS Pusher "A" for 2 seconds until the stopwatch hour, minute and second hand is reset to "0".

Standard stopwatch measurement:

1. PRESS Pusher "A" to start timing.
2. PRESS Pusher "A" to stop timing.
3. PRESS Pusher "B" to reset.

Split time:

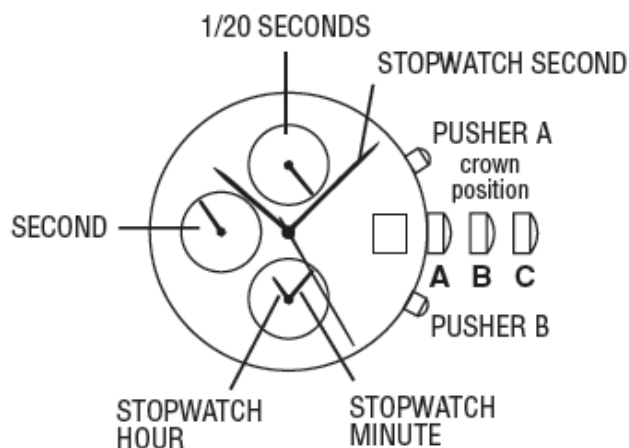
1. PRESS Pusher "A" to start timing.
2. PRESS Pusher "B" to stop split.
3. PRESS Pusher "B" to begin again.
4. PRESS Pusher "A" to stop.
5. PRESS Pusher "B" to reset.

Accumulated elapsed time measurement:

1. PRESS Pusher "A" to start timing.
2. PRESS Pusher "A" to stop timing.
3. PRESS Pusher "A" to restart timing.
4. PRESS Pusher "A" to stop 2nd timing.
5. PRESS Pusher "B" to reset.

Timing 2 competitors:

1. PRESS pusher "A" to start timing.
2. PRESS pusher "B" to stop timing of first event. Stopwatch continues to run internally.
3. PRESS pusher "A" to stop timing of second event.
4. PRESS pusher "B" to view time of second event.
5. PRESS pusher "B" to reset.



Instructions: 2, 6, 10 Three-Eye Chronograph With Or Without Date Window

NOTE: Crown position "1", "2" & "3"

NOTE: Pushers "A" (top) & "B" (bottom)

NOTE: Left eye "minute totalizer"

NOTE: Right eye "small second"

NOTE: Centre eye "date indicator"

This chronograph watch has 3 functions: TIME, CALENDAR, STOPWATCH

TIME

To set the time:

1. PULL Crown to position "3" .
2. TURN Crown either way to correct time.
3. PUSH Crown to position "1" .

CALENDAR

To set the calendar:

1. PULL Crown to position "2" .
2. TURN Crown clockwise to correct the date.
3. PUSH in Crown to position "1" .

STOPWATCH

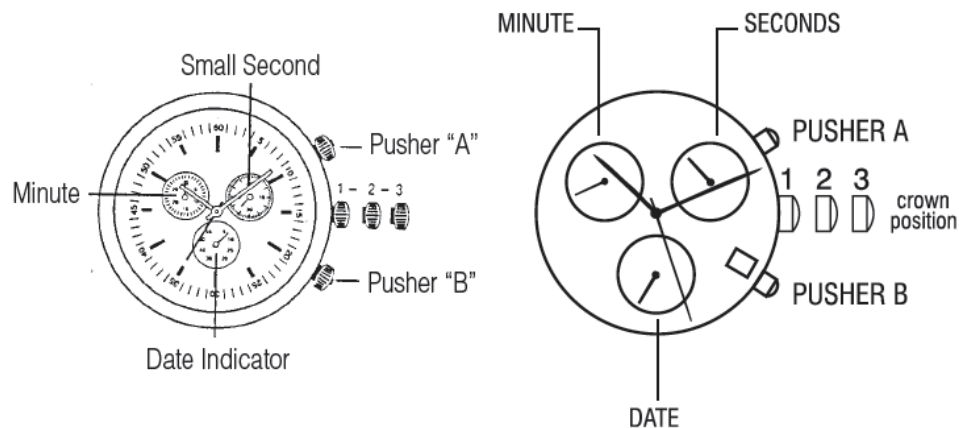
The stopwatch is capable of measuring:

1. Minutes elapsed up to 30 minutes (left eye).
2. Chronograph hand 1/5 second

BEFORE USING THE STOPWATCH, reset the stopwatch hands to the "60" position by mean of pusher "B". If stopwatch Hands move improperly, reset the hands as follow:

To reset stopwatch hands:

1. PRESS Pusher "A" & "B".
2. PRESS Pusher "B" intermittently until the left eye hand is reset to "0".
3. PRESS Pusher "A" intermittently until the chronograph hand reset to "60".
4. PRESS Pusher "A" & "B".



Instructions: 2, 6, 10, Three-Eye Chronograph With Or Without Date Window (cont.)

NOTE: PRESSING and HOLDING either Pusher "A" or "B" will cause the hands to continue to move until the pusher is released.

Standard stopwatch measurement:

1. PRESS Pusher "A" to start timing.
2. PRESS Pusher "A" to stop timing.
3. PRESS Pusher "B" to reset.

Accumulated elapsed time measurement:

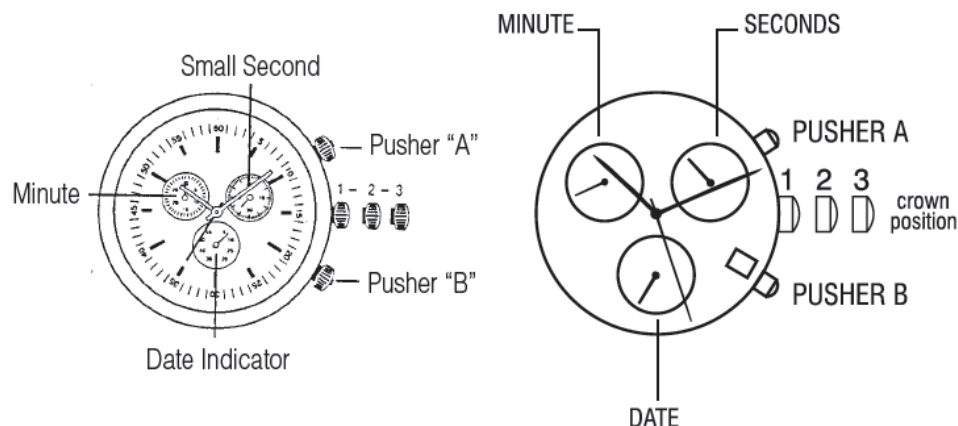
1. PRESS Pusher "A" to start timing.
2. PRESS Pusher "A" to stop timing.
3. PRESS Pusher "A" to restart timing.
4. PRESS Pusher "A" to stop 2nd timing.
5. PRESS Pusher "B" to reset.

Split time measurement:

1. PRESS Pusher "A" to start timing.
2. PRESS Pusher "B" to split.
3. PRESS Pusher "B" to begin again.
4. PRESS Pusher "A" to stop.
5. PRESS Pusher "B" to reset.

Timing 2 competitors:

1. PRESS Pusher "A" to start timing of first event.
2. PRESS Pusher "B" to stop timing of first event. Stopwatch continues to run internally.
3. PRESS Pusher "A" to stop timing of second event.
4. PRESS Pusher "B" to view time of second event.
5. PRESS Pusher "B" to reset.



Instructions: 2, 6, 10, Three-Eye Chronograph With Or Without Date Window (cont.)

Timing 2 competitors:

1. PRESS Pusher "A" to start timing of first event.
2. PRESS Pusher "B" to stop timing of first event. Stopwatch continues to run internally.
3. PRESS Pusher "A" to stop timing of second event.
4. PRESS Pusher "B" to view time of second event.
5. PRESS Pusher "B" to reset.

BEFORE USING THE STOPWATCH, reset the stopwatch hands to the "60" position by mean of pusher "B". If stopwatch Hands move improperly, reset the hands as follow:

To reset stopwatch hands:

1. PRESS Pusher "A" & "B".
2. PRESS Pusher "B" intermittently until the left eye hand is reset to "0".
3. PRESS Pusher "A" intermittently until the chronograph hand reset to "60".
4. PRESS Pusher "A" & "B".

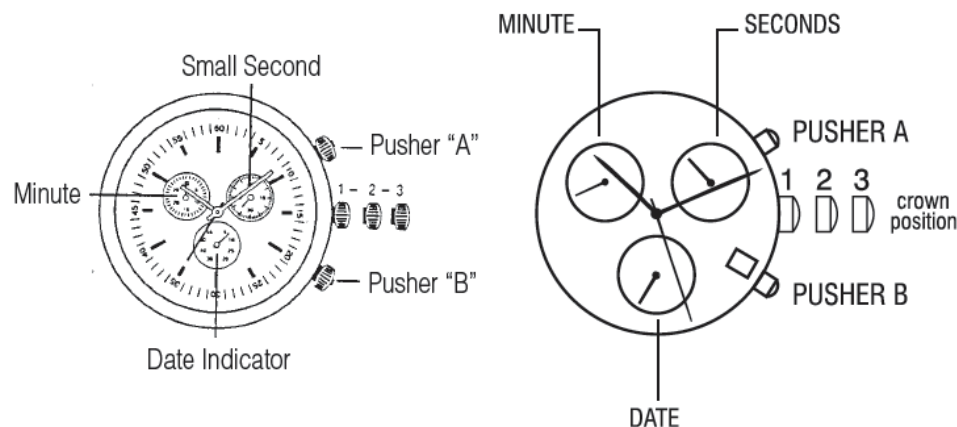
NOTE: PRESSING and HOLDING either Pusher "A" or "B" will cause the hands to continue to move until the pusher is released.

Standard stopwatch measurement:

1. PRESS Pusher "A" to start timing.
2. PRESS Pusher "A" to stop timing.
3. PRESS Pusher "B" to reset.

Accumulated elapsed time measurement:

1. PRESS Pusher "A" to start timing.
2. PRESS Pusher "A" to stop timing.
3. PRESS Pusher "A" to restart timing.
4. PRESS Pusher "A" to stop 2nd timing.
5. PRESS Pusher "B" to reset.



Instructions: 3, 6, 9, 12 Four-Eye Chronograph

NOTE: Crown position "A" & "B"

NOTE: Pushers "A" (top) & "B" (bottom)

NOTE: 12 o'clock eye "1/10" or seconds elapsed"

NOTE: 9 o'clock eye "minutes elapsed"

NOTE: 6 o'clock eye "seconds elapsed"

NOTE: 3 o'clock eye "24-hour"

This chronograph watch has 2 functions: TIME, STOPWATCH.

TIME

To set the time:

1. PULL Crown to "B" position.
2. TURN Crown either way to correct time.
3. PUSH Crown in to "A" position.

STOPWATCH

The stopwatch is capable of measuring: 1/10 seconds elapsed up to 60 minutes (top eye). Minutes elapsed up to one hour (middle eye). Seconds elapsed up to one minute (bottom eye) BEFORE USING THE STOPWATCH, reset the stopwatch hands to the "60" and "0" positions.

To reset stopwatch hands:

1. PULL Crown to position "B".
2. PRESS Pusher "A" intermittently until the top eye hand is reset to "0".
3. PRESS Pusher "B" intermittently until the minute and second eye hands reset to "60".

NOTE: PRESSING and HOLDING either Pusher "A" or "B" will cause the hands to continue to move until the pusher is released.

Standard stopwatch measurement:

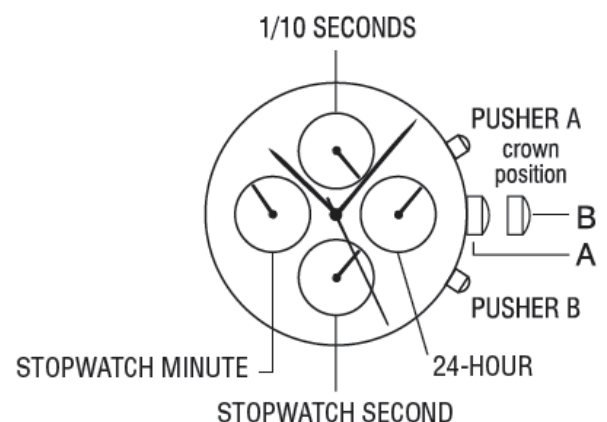
1. PRESS Pusher "A" to start timing.
2. PRESS Pusher "A" to stop timing.
3. PRESS Pusher "B" to reset.

Accumulated elapsed time measurement:

1. PRESS Pusher "A" to start timing.
2. PRESS Pusher "A" to stop timing.
3. PRESS Pusher "A" to restart timing.
4. PRESS Pusher "A" to stop 2nd timing.
5. PRESS Pusher "B" to reset.

Split time measurement:

1. PRESS Pusher "A" to start timing.
2. PRESS Pusher "B" to stop split.
3. PRESS Pusher "B" to begin again.
4. PRESS Pusher "A" to stop.
5. PRESS Pusher "B" to reset.



Instructions: Ana-Digit

FEATURES

Hour, Minute, Second, Month, Date, Back Light (EL)

NORMAL TIME MODE

1. PRESS S1 once to view Month & Date
2. PRESS S1 twice to view Second
3. PRESS S2 once, ""Time"" & ""Date"" mode will be displayed alternatively
PRESS S1 twice, back to Time mode"
4. PRESS EL to light-up display

SETTING SEQUENCE

1. PRESS S2 twice to set "Month"; Press S1 to advance
2. PRESS S2 once to set "Date"; Press S1 to advance
3. PRESS S2 once to set "Hour"; Press S1 to advance
4. PRESS S2 once to set "Minute"; Press S1 to advance
5. PRESS S2 once when setting is complete. Normal time will be displayed
(Press S1 if time mode does not flash).



Instructions: Digital With Alarm / Dual Time / Chronograph

FEATURES

Hour, Minute, Second, Day, Date, Month, Dual Time, Alarm, Timer
Chronograph 1/100 Second with Split Back Light (EL)

OPERATION MODES

1. PRESS S3 once to view Time, Day, Date, Month
2. PRESS S3 once to view Alarm
3. PRESS S3 once to view Chrono
5. PRESS S3 once to set Timer
6. PRESS S3 again back to Time mode SETTING SEQUENCE

A) NORMAL TIME SETTING .

1. HOLD S2 2 seconds to set "Second"; Press S1 for 00
2. PRESS S3 once to set "Minute"; Press S1 to advance
3. PRESS S3 once to set "Hour"; Press S1 to advance
4. PRESS S3 once to set hour display; Press S1 to set "12H" / "24H"
5. PRESS S3 once to set "Month"; Press S1 to advance
6. PRESS S3 once to set "Date"; Press S1 to advance
7. PRESS S3 once to set "Day"; Press S1 to advance
8. PRESS S2 once when setting is complete. Normal time will be displayed.



Instructions: Digital With Alarm / Dual Time / Chronograph (cont.)

B) DUAL TIME SETTING .

1. PRESS S1 to Dual Time
2. HOLD S2 2 seconds to set "Minute"; Press S1 for 00
3. PRESS S3 once to set "Hour"; Press S1 to advance
4. PRESS S2 once when setting is complete. Normal time will be displayed.

C) ALARM SETTING

PRESS S3 to Alarm Mode

1. PRESS S1 once to on "Alarm" ONLY
2. PRESS S1 once to on "Chime" ONLY
3. PRESS S1 once to on "Alarm" & "Chime"
4. PRESS S1 once to off "Alarm" & "Chime"
5. HOLD S2 2 seconds to set "Hour"; Press S1 to advance
6. PRESS S3 once to set "Minute"; Press S1 to advance
7. PRESS S2 once when setting is complete. Return to Alarm Mode.

D) CHRONOGRAPH

PRESS S3 twice to Chronograph function

1. PRESS S1 to "Start" / "Stop" timing
2. PRESS S2 to "Split" time
3. PRESS S1, then S2 to "Reset"

E) TIMER

PRESS S3 three times to Time Mode

1. HOLD S2 2 seconds to set "Hour"; Press S1 to advance
2. PRESS S3 once to set "Minute"; Press S1 to advance
3. PRESS S2 once when setting is complete.
4. PRESS S1 to "Start" / "Stop"
5. PRESS S2 to "Reset"

When counting complete, alarm will sound.



Instructions: Digital With Alarm, Chronograph 1/100 Sec. Countdown & Dual Time

FEATURES

Hour, Minute, Second, Day, Date, Month, Dual Time, Alarm, Countdown
Chronograph 1/100 Second with lap control, Back Light (EL)

SETTING SEQUENCE

A) NORMAL TIME SETTING

1. HOLD S2 3 seconds to "Second"; Press S1 or S3 for 00
2. PRESS S2 once to set "Minute"; Press S1 or S3 to advance /backward
3. PRESS S2 once to set "Hour"; Press S1 or S3 to advance /backward
4. PRESS S2 once to set "Year"; Press S1 or S3 to advance /backward
5. PRESS S2 once to set "Month"; Press S1 or S3 to advance /backward
6. PRESS S2 once to set "Day"; Press S1 or S3 to advance /backward
7. HOLD S2 3 seconds to return to normal time display.

B) DUAL TIME SETTING

1. PRESS S1 to Dual Time
2. HOLD S2 2 seconds to set "Minute"; Press S1 for 00
3. PRESS S3 once to set "Hour"; Press S1 to advance
4. PRESS S2 once when setting is complete. Normal time will be displayed.

C) ALARM SETTING

PRESS S3 to Alarm Mode

1. PRESS S1 to "Alarm 1" – "Alarm 5"
2. HOLD S2 2 seconds until "AL" flash
PRESS S1/S3 to set "Alarm" / "Chime"
3. PRESS S2 once to set "Hour" Press S1 or S3 to advance /backward
4. PRESS S2 once to set "Minute" Press S1 or S3 to advance /backward
5. HOLD S2 3 seconds when setting is complete. Return to Alarm Model.



Instructions: Digital With Alarm, Chronograph 1/100 Sec. Countdown & Dual Time (cont.)

D) COUNTDOWN TIMER SETTING

(i) PRESS S3 twice to Countdown Timer function [T1] (1~90 mins)

1) HOLD S2 2 seconds to set "Minute"; Press S1/S3 to advance /backward

2) HOLD S2 3 sec to end setting

3) PRESS S2 to start/stop countdown

(ii) PRESS S1 to get into Countdown timer [T2] (from normal time to preset time – within 24hrs)

1) HOLD S2 3 seconds to set "Hour"; Press S1/S3 to advance /backward

2) PRESS S2 once to set "Minute" Press S1 or S3 to advance /backward

3) HOLD S2 3 sec to end setting

4) PRESS S2 to start/stop countdown. Time different between Normal time & Preset time will be shown

(iii) PRESS S1 to get into Countdown Day Timer [T3]

1) HOLD S2 3 seconds to set "Year"; Press S1/S3 to advance /backward

2) PRESS S2 once to set "Month" Press S1 or S3 to advance /backward

3) PRESS S2 once to set "Day" Press S1 or S3 to advance /backward

4) PRESS S2 once when setting is complete.

E) CHRONOGRAPH

PRESS S3 three times to Chronograph Mode

1) PRESS S1 to select LAP (LAP) or Split (SPL) option

2) PRESS S2 to start/stop

3) PRESS S1 to get Lap/Split time

5) HOLD S2, then press S1 to "Reset"



Instructions: Day / Date / A.M. / P.M. / Sun / Moon

To set the time:

1. PULL out Crown to C position.
2. TURN Crown clockwise to correct time. Day / am / pm / moon will also change.
3. PUSH in Crown to A position.

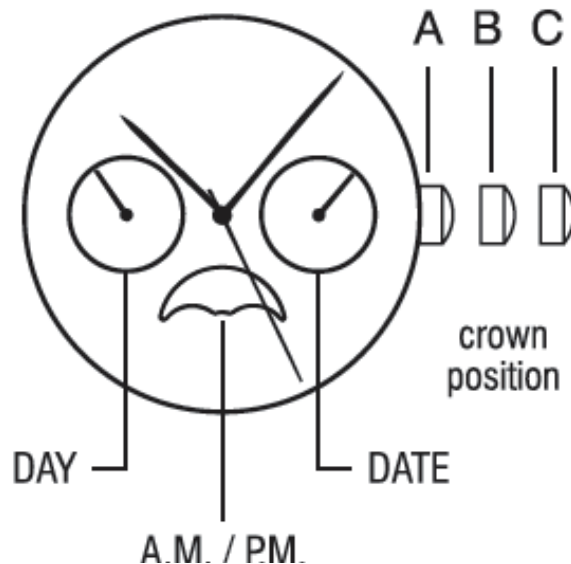
NOTE: Remember to set time for am or pm (sun or moon)

To set the date:

1. PULL out Crown to B position.
2. TURN Crown clockwise to correct date.
3. PUSH in crown to A position.

To set the day:

1. PULL out Crown to C position.
2. Advance time 24 hours to change the day.
3. PUSH in Crown to A position.



Instructions: Digital

Features:

Hour, minute, seconds, month & date.

Setting Sequence:

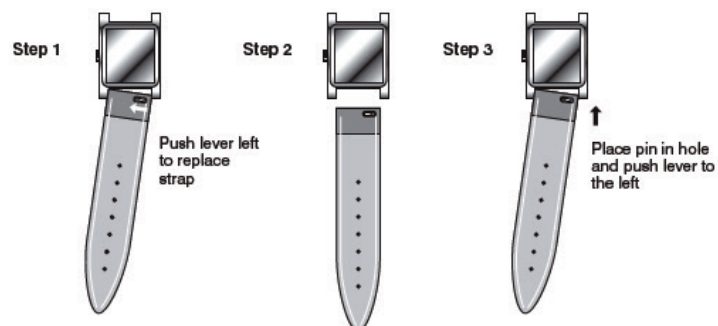
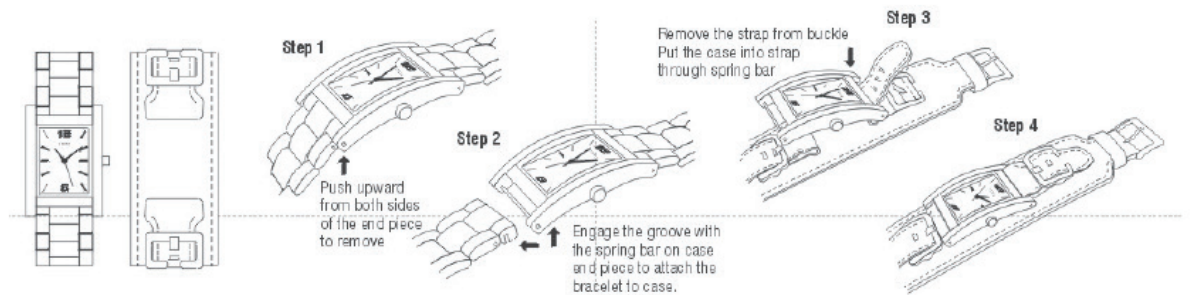
1. PRESS "B" to get to Normal Time mode.
2. Set Month: PRESS "B" to "Month". PRESS "A" to advance.
3. Set Date: PRESS "B" to "Date". PRESS "A" to advance.
4. Set Hour: PRESS "B" to "Hour". PRESS "A" to advance.
("A"=A.M., "P"=P.M., "H"=24 hour format)
5. Set Minute: PRESS "B" to "Minute". PRESS "A" to advance.
6. When hour & minutes are set, PRESS "A" to confirm.
7. Return to Normal Time: PRESS "B".

To view month & date from Normal Time mode, PRESS "A".



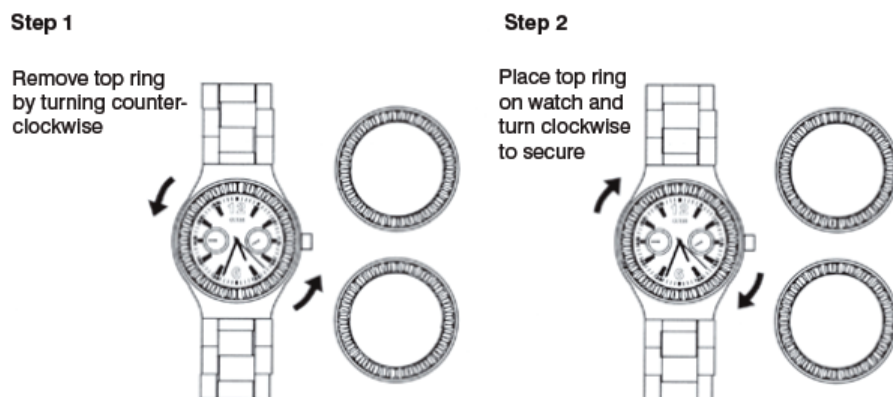
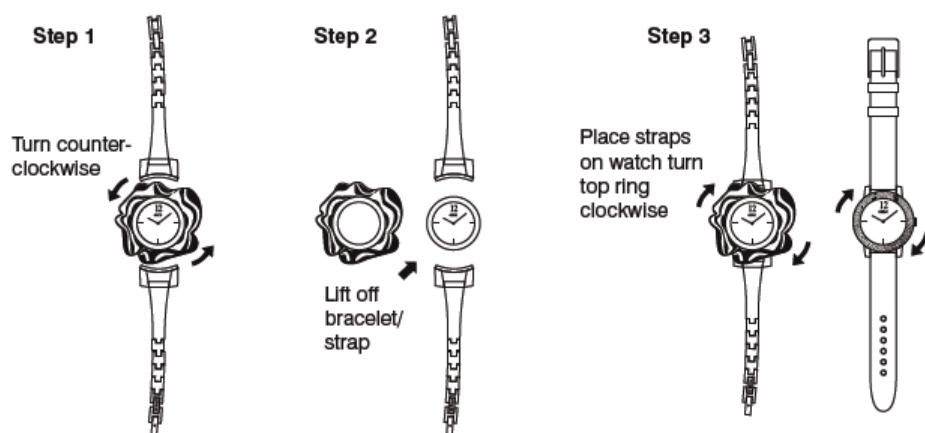
Instructions: Interchangeables

How to remove straps and metal bands



Instructions: Interchangeables

How to replace top rings



Watch Repair

U.S. Only

<https://sequelrepair.com/guess-watch-repair.aspx>

Any questions, contact us

1.8002GUESS5

Hours of Operations

Mon - Thurs. 8-5 EST | Friday 8-12 EST

support@guesswatches.com

Customers Outside The U.S.

<https://guesswatches.com/pages/guesswatches-global-representative>

Customer Service

1.8002GUESS5

Hours of Operations

Mon - Thurs. 8-5 EST | Friday 8-12 EST

support@guesswatches.com

For customers outside the U.S.

<https://guesswatches.com/pages/guesswatches-global-representative>